

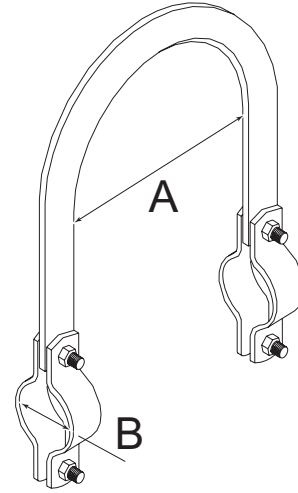
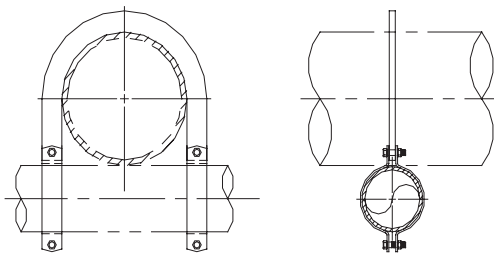


Sway Brace Attachment

2002

Technical Features

- Sizes available for bracing pipe (Nominal) : DN65/2 1/2" to DN200/8".
- Pipe size used for bracing : 1"/DN25 and 1 1/4"/DN32.
- Features : Will not damage thin wall, plastic, copper, or ductile iron pipe. Easy verification of proper installation.
- Material : Carbon steel.
- Finish : Plain or electrogalvanized.



1 - When used with other Tolco® bracing products.

Sway Brace Attachment - 2002

Physical Data

"A"		"B"		Reference	
Nominal (metric)	Pipe Size (inch)	Nom. Bracing (metric)	Pipe Size (inch)	Plain	Electrogalvanized
DN65	2 1/2"	DN25	1 1/2"/DN40	2002-02500150	2001EG-02500150
DN80	3"	DN25	1 1/2"/DN40	2002-03000150	2001EG-03000150
DN100	4"	DN25	1 1/2"/DN40	2002-04000150	2001EG-04000150
DN150	6"	DN25	1 1/2"/DN40	2002-06000150	2001EG-06000150
DN200	8"	DN25	1 1/2"/DN40	2002-08000150	2001EG-08000150
DN65	2 1/2"	DN32	1"/DN50	2002-02500200	2001EG-02500200
DN80	3"	DN32	1"/DN50	2002-03000200	2001EG-03000200
DN100	4"	DN32	1"/DN50	2002-04000200	2001EG-04000200
DN150	6"	DN32	1"/DN50	2002-06000200	2001EG-06000200
DN200	8"	DN32	1"/DN50	2002-08000200	2001EG-08000200

Important Design and Installation Notice

Designed, tested, and approved to be used only with other Tolco® bracing products available from Viking SupplyNet®.

The Sway Brace Attachment is designed to be used in conjunction with Series 900 sway brace attachments all joined together with bracing pipe and installed according to National Fire Protection Association (NFPA) 13 for bracing pipe against sway and seismic disturbance.

Place the Sway Brace Attachment over the pipe to be braced. Slide bracing pipe through both attachment holes so that it extends at least 25mm (1") beyond the last hole. Tighten down the two hex nuts until the ear ends of both sides of the Sway Brace Attachment touch each other.